



## ASSEMBLY AND OPERATING INSTRUCTIONS

Shelving rack

FB200



Please read this manual before using the product and follow the instructions it contains!

<b>GENERAL</b>	Explanation of terms	3
	Overview	4
<b>NOTE</b>	General information	6
	Assembly preparation	6
<b>PARTS LIST</b>	Individual parts & assembly material	7
<b>ASSEMBLY</b>	Upright	8
	Beams / fastening struts	9
	Shelves	10
	Service & contact	11



**Do not over-tighten screws!**  
Screws are only hand-tightened.

## EXPLANATION OF TERMS

### UNIT LOAD



- Total load capacity between 2 horizontal bars
- Max. unit load FB200: 1000 kg

### COMPARTMENT LOAD



- Total load capacity per beam level
- Max. compartment load FB200: 200 kg per level

### POINT LOAD



- A load on the foundation generated by the upright
- Max. point load per foot plate: 500 kg

**Load capacity**

The information on load capacity refers to a rack with at least 2 units and at least 2 compartment levels, which are evenly suspended in height.

## OVERVIEW

### Upright

A complete upright consists of two galvanised upright profiles, which are fastened to the foot parts using a screw connection.

The attached beams connect the upright with the next upright.

### Shelves

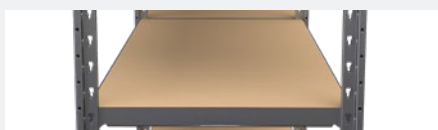
They are placed directly onto the beams and are self-fixing due to the special design of the stepped beam. Shelves are available in depths of 30 cm and 50 cm.

#### Steel shelf

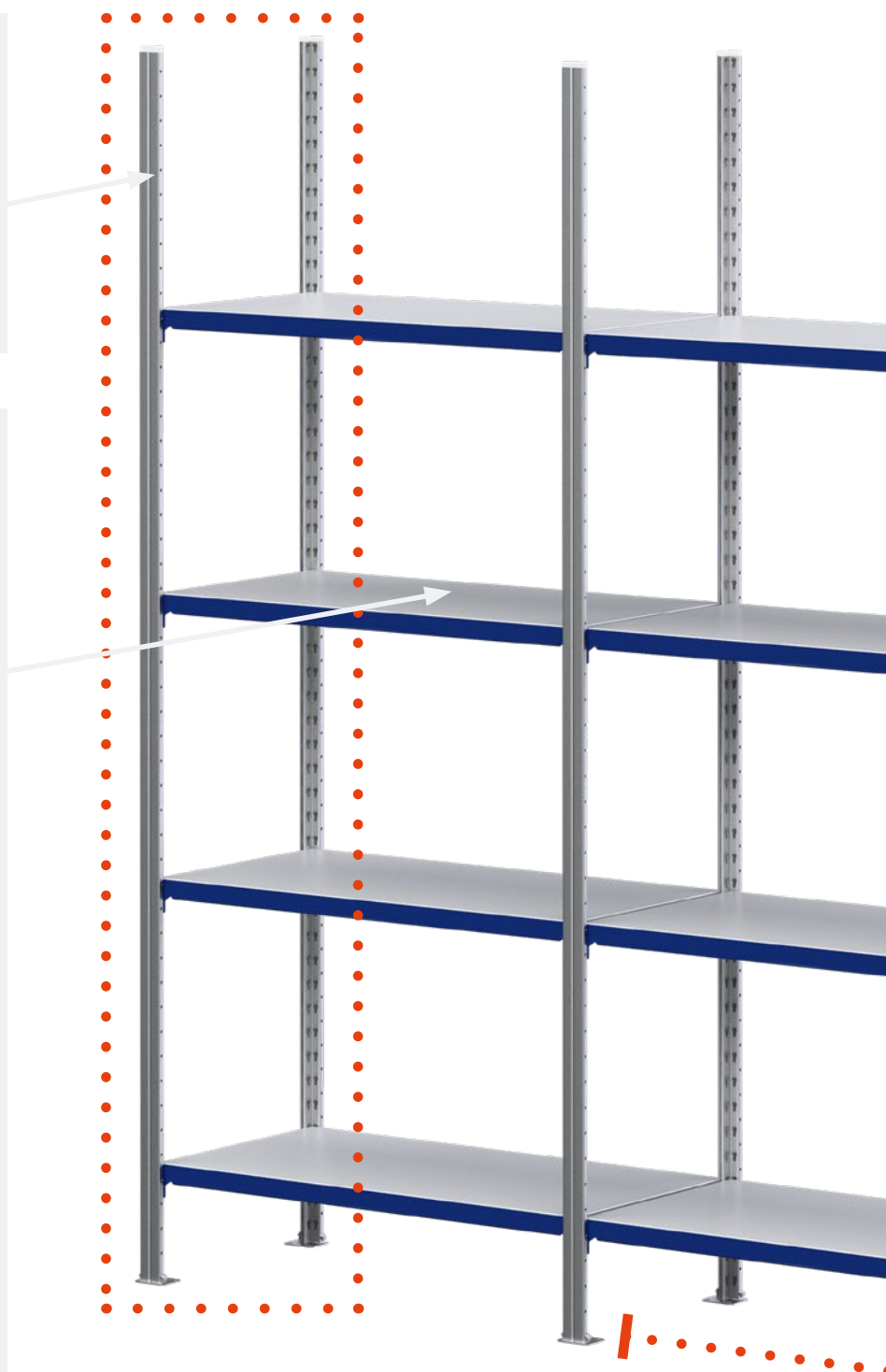


Shelf made of steel 100 cm wide. Impressively robust construction. The easily wiped surface also guarantees easy maintenance.

#### Wooden shelf



Wooden shelf, 100 cm wide with a shelf thickness of 16 mm. This shelf is noise-absorbing and can also be used on both sides.



### Length of unit

The unit spanned between two uprights serves as an effective storage area. The standard unit length is approx. 100 cm.



### Beams & fastening struts

Beams & fastening struts are the load carriers of a storage rack.

The shelf is placed on these. They can be individually attached at 50 mm increments using the simple plug-in construction.



Beams are 100 cm long. Fastening struts are available in lengths of 30 cm & 50 cm.

### Load capacity label

Self-adhesive load capacity label with information on load capacity – complies with the German DGV specifications: 108-007 (formerly BGR 234).

Always supplied and must be attached to the rack in a clearly visible position.



## GENERAL INFORMATION

### PREVENT DANGERS

The TOPREGAL product you have purchased is manufactured in accordance with the current state of the art and complies with the applicable regulations and rules. Despite all this, it can pose a danger to persons and property if:

- The rack is not properly assembled, improperly modified or converted.
- Accessories used are not original ones.
- The safety regulations are not observed.

Therefore, every person involved in the assembly must read and follow the safety regulations and, if necessary, you should have them confirm this with a signature.

### ACCIDENT PREVENTION REGULATIONS

All relevant accident prevention regulations apply:

- Generally accepted safety regulations
- Country-specific provisions
- Guidelines for storage facilities and equipment of the respective country

### PLEASE NOTE

Before assembly, commissioning or use, the information contained in these instructions must be observed in order to avoid hazards. If you need technical support, please contact us.

In order to avoid personal injury and damage to property, please observe the following:

- The guidelines of the storage facilities and equipment ZH 1/428 of the German Federation of Institutions for Statutory Accident Insurance and Prevention – in the current issue.
- The relevant workplace directives and regulations.
- The information from your safety officer
- The structural conditions and regulations, in particular the condition and load-bearing capacity of the floor.
- And ensure that the facilities are in good order and condition. Damaged or deformed components must be replaced immediately. If in doubt, stop assembly or use, secure the installation area and inform your safety officer.
- That loading may only be carried out after all assembly work has been completed.
- That the persons carrying out the assembly and conversion work are to be secured against falling in accordance with the German UVV construction work (VBG 37 §12).
- Protective clothing such as helmets, gloves, safety shoes, etc. must be worn during assembly and conversion.
- Modifications and changes to the device not approved by the manufacturer will void the warranty.

## ASSEMBLY PREPARATION

All original TOPREGAL components used to stabilise the warehouse equipment must be installed without exception. These include in particular frame components, unit assemblies, diagonal struts, beams, floor anchors, screws / fastening elements and safety pins. During assembly one should ensure that the screws are not over-tightened. The screws must be hand-tightened and tightened later using suitable tools such as a cordless drill or a wrench.

### PLANNING

Before the racks are assembled, the area intended for them is measured and the position of the rows of shelves is recorded. Ensure that the rows of racks are aligned. Tape measure and chalk line are best suited for this.



## TESTING OF FLOOR AND FLOOR TOLERANCES

Prior to setting up rack systems, please check whether the load-bearing capacity of the floor is suitable to safely withstand the intended loads.

If in doubt, consult a specialist and have the load capacities determined. The responsibility for the correctness of the information lies with the client.



### Assembly

Racks may only be set up and converted by specially instructed persons in compliance with the assembly and operating instructions supplied by us. Racks may only be converted when they are not loaded.

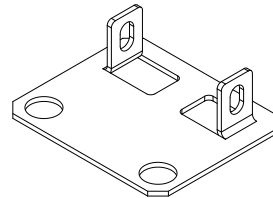
## INDIVIDUAL PARTS & ASSEMBLY MATERIAL

A



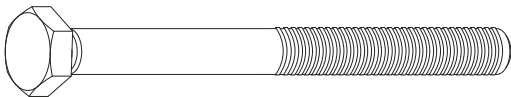
Upright profile

B



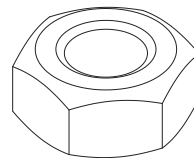
Foot part

C



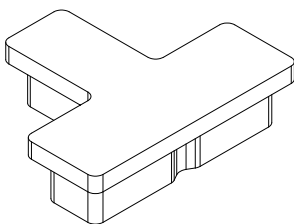
Screw

D



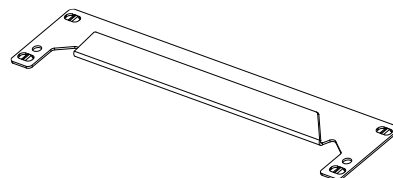
Nut

E



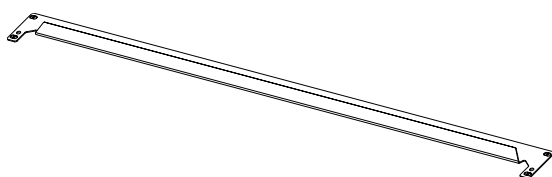
Cover

F



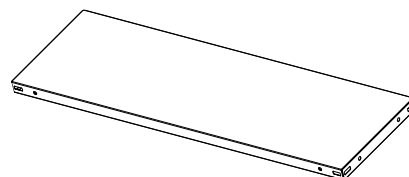
Fastening strut 30 cm / 50 cm

G



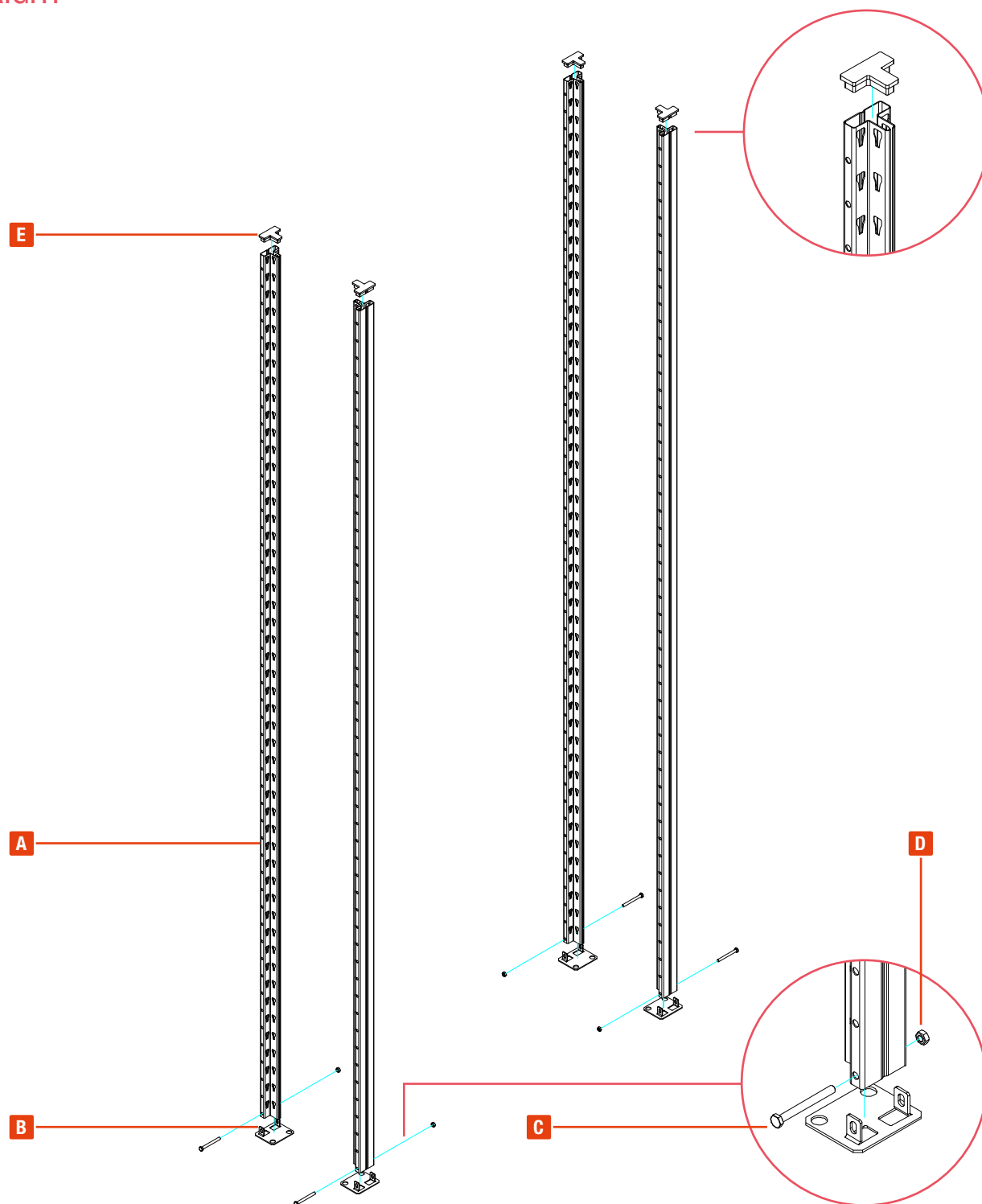
Stepped beam 100 cm

H



Shelf 30 cm / 50 cm deep

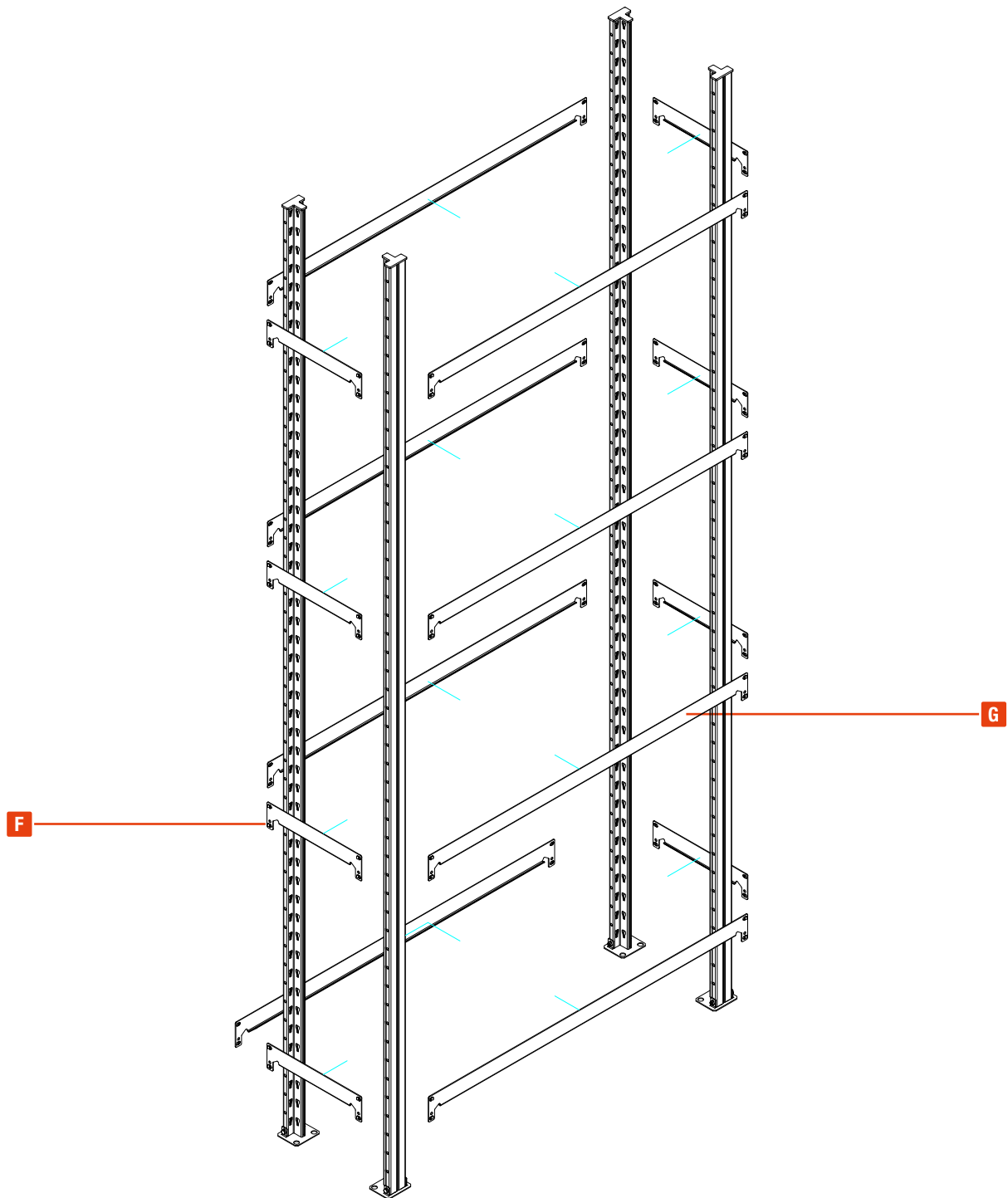
## UPRIGHT



1. Place upright profile **A** on foot part **B** and secure with screw **C** and nut **D**.
2. Then place the cover **E** on top of the upright.



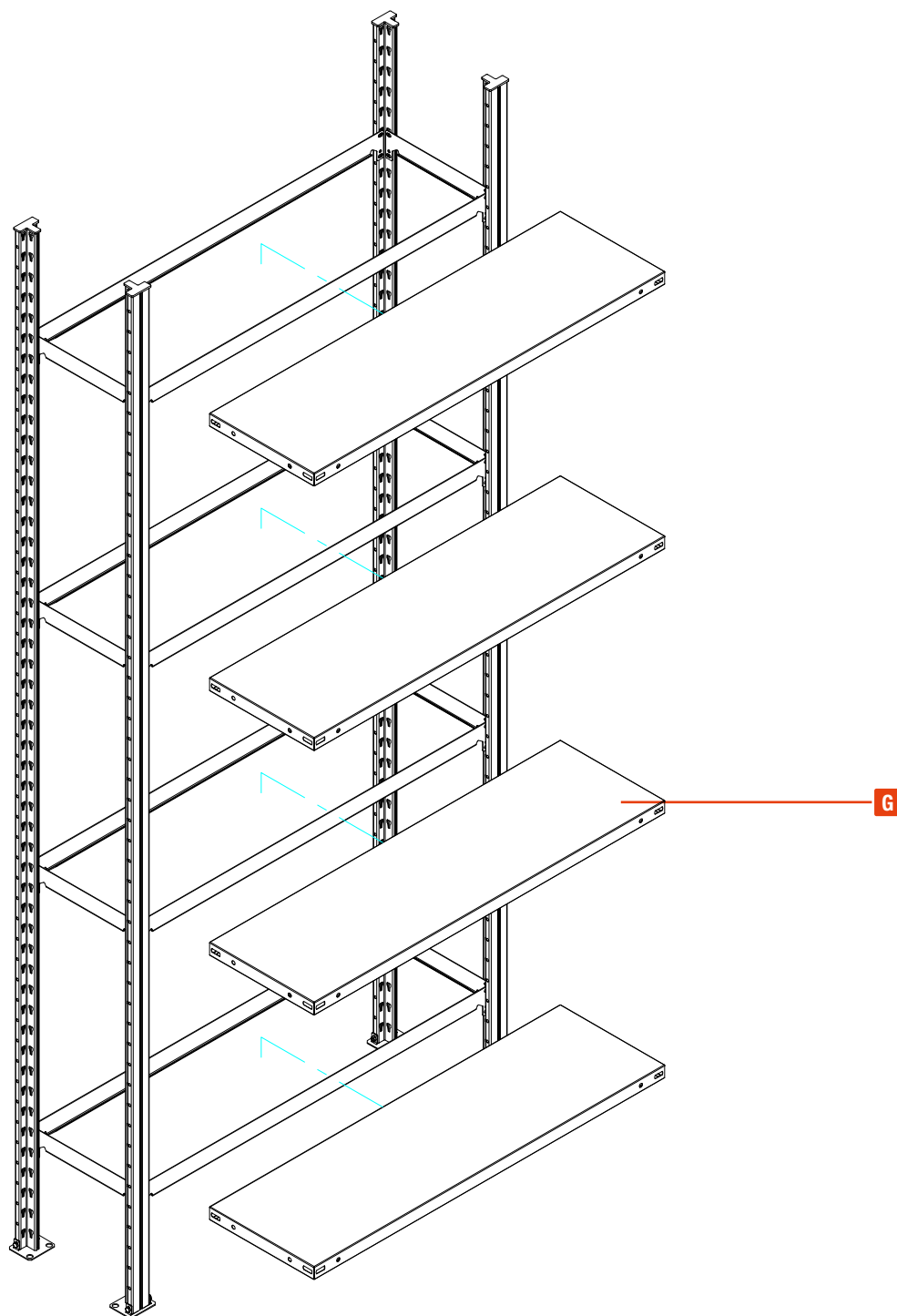
## BEAMS / FASTENING STRUTS



1. Attach the fastening strut **F** to the desired position.
2. Then attach the stepped beams **G**.

**The beams & fastening struts do not have to be screwed on, they are simply attached to the clips.**

## SHELVES



1. Insert shelves **H** into the beams.

**Thanks to the shape of the stepped beams & fastening struts, the shelves fix themselves.**

## SERVICE & CONTACT

Contact our product experts and find help and solutions for your product. Here you will find all contact information listed by country and language: [www.topregal.co.uk/en/service](http://www.topregal.co.uk/en/service)

Responsible for the content:

TOPREGAL GmbH

Industriestrasse 3

70794 Filderstadt

GERMANY

[www.topregal.com](http://www.topregal.com)

# TOPREGAL