



OPERATING INSTRUCTIONS

Machine vice
MA-S200



Please read this manual before using the product and follow the instructions it contains!

GENERAL

Foreword	3
Safety instructions	3
Technical data	3
Overview of the main components	4
Operating instructions	4

MAINTENANCE

Regular inspections	5
	5

PARTS LIST

Parts list	5
Service & Contact	5

FOREWORD

Congratulations on the purchase of your machine vice. The MA-S200 has been manufactured from high quality materials, specifically designed for durable and reliable use.

For your own safety and to ensure correct operation of the machine vice, be sure to read and follow these operating instructions before using it. Keep these operating instructions.

Check the MA-S200 for transport damage. Damaged vices must not be put into use. The machine vice is used to fix workpieces made of metal. Improper handling may result in injury or damage to the machine.

TecMaschin is not liable for damage resulting from the improper use of the machine vice, or from disregarding the specifications and rules of conduct in this operating manual. The operator / user must ensure the correct use of the MA-S200 by trained and authorized personnel.

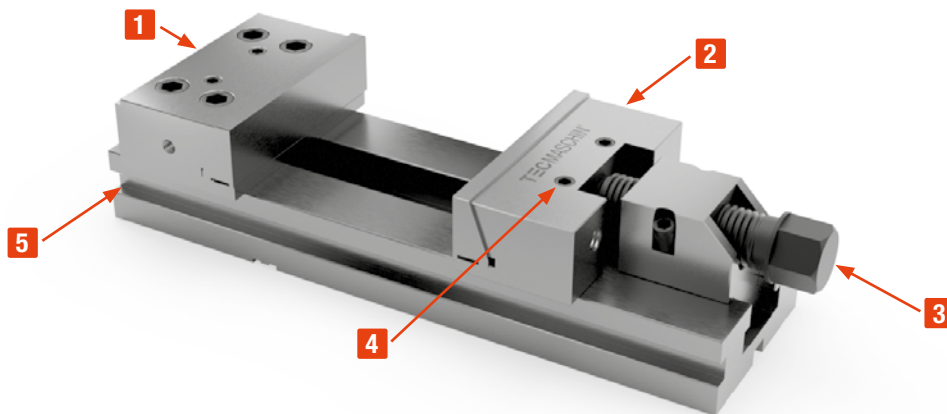
SAFETY INSTRUCTIONS

- Only trained personnel are authorized to use the machine vice.
- Proper assembly, operation and maintenance are essential requirements with regard to occupational safety.
- Check the machine vice before each use. Only fully functional vices may be used.
- Clamp the machine vice firmly and secure it several times.
- Legal and company requirements for occupational safety and accident prevention must be observed at all times.
- Mount the machine vice on a stable, non-deformable base.
- Modifications or alterations to the machine vice which have not been approved by the manufacturer must be refrained from. These will exclude any claims under warranty.
- After a longer period of non-use, be sure to retighten screws to ensure a firm fixation.
- Clamp long workpieces in additional clamping devices to avoid large torsional forces.
- The machine vice may only be used for clamping rigid workpieces.
- Modifications and changes to the device not approved by the manufacturer will void the warranty.

TECHNICAL DATA

Type	Unit	Value
Width	mm	150
Length	mm	420
Height	mm	100
Slide height	mm	50
Rail height	mm	50
Weight	kg	31.5
Span	mm	200
Clamping force	kN	49
Tolerance	mm	0.05
Material		20CrMnTi

OVERVIEW OF THE MAIN COMPONENTS



No.	Description
1	Left clamping jaw
2	Right clamping jaw
3	Clamping screw
4	Jaw fixation
5	Hardened rail

OPERATING INSTRUCTIONS

BEFORE FIRST USAGE

- Check the machine vice for transport damage. Damaged machine vices must not be put into operation.
- Clean the machine vice if necessary.

ASSEMBLY

- Make sure that the work table or the support on which the machine vice is to be mounted is cleaned and level.
- Take the 4 clamping claws and screw them to the support.
- Slide the vice between the clamping claws and tighten them.
- Now the machine vice is ready for use.



Make sure that the machine vice is firmly fixed during metal-cutting processes. Loose machine vices or unclamped workpieces can be a hazard.

CLAMPING WORKPIECE

- First determine the size of the workpiece with the left clamping jaw by sliding it to the desired position in the rail and tightening it.
- Place the workpiece between the clamping jaws. Make sure that flat surfaces lie on top of each other and that nothing can slip. If necessary, use the enclosed accessories.
- Move the right clamping jaw and thus clamp the workpiece. Fix the clamping jaw.
- Tighten the clamping jaw using the hexagonal wrench.

REGULAR INSPECTIONS

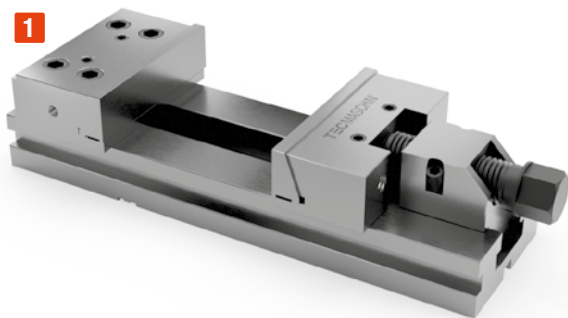
- Perform a visual inspection of the machine vice before each use. Pay particular attention to deformations and cracks.
- Clean the machine vice at regular intervals according to the working conditions.
- Oil the machine vice regularly. An interval of 40 working hours has proven effective. In case of daily use, the machine vice should be oiled after each use.

The respective inspection points (plus equipment identification) for the periodic inspections/thorough examinations are to be checked in an integrated manner in the associated inspection report of the lifting equipment, taking into account the mandatory fulfilment of the Lifting Operations and Lifting Equipment Regulations 1998 (LOLER). (Recommendation: FEM4.004)

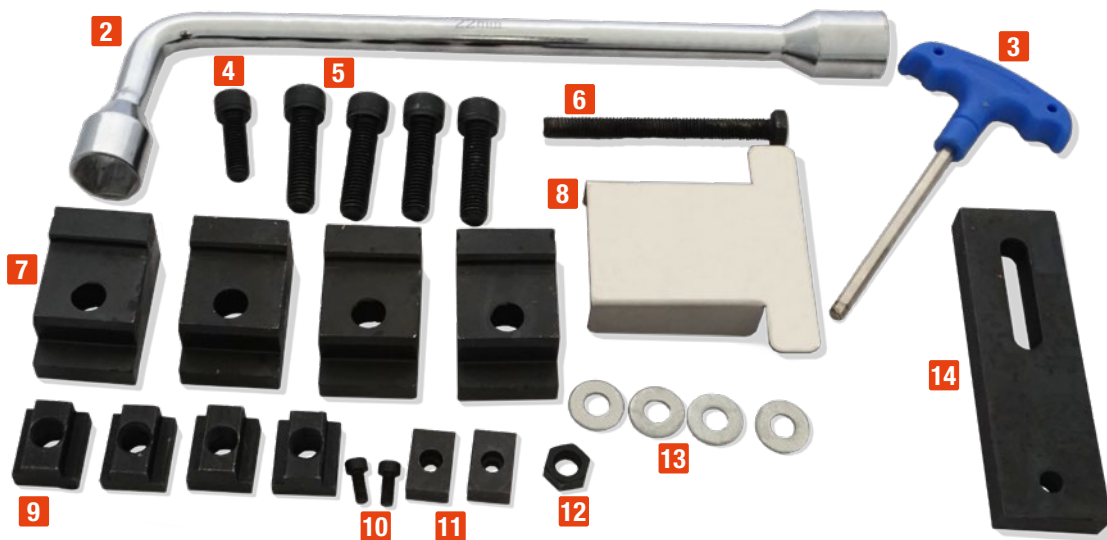


Do not use compressed air to clean the machine vice. Chips lying on it can be swirled up and cause injuries. Contamination can damage the machine vice.

PARTS LIST



No.	Description	Quantity
1	Machine vice	1
2	External hexagon wrench	1
3	Allen wrench	1
4	M4 hexagon head screw	1
5	M6 hexagon head screw	4
6	Stop screw	1
7	Clamping claws	4
8	Support plate	1
9	T-slot nut	4
10	Screws	2
11	Slot nut	2
12	M6 nut	1
13	Washers	4
14	Workpiece stop	1



SERVICE & CONTACT

Contact our product experts and find help and solutions for your product. Here you will find all contact information listed by country and language: www.topregal.co.uk/en/service

Responsible for the content:
 TOPREGAL GmbH
 Industriestrasse 3
 70794 Filderstadt
 GERMANY
www.topregal.com

TECMASCHIN