



OPERATING INSTRUCTIONS

Wet and dry vacuum cleaner

NTS80



Please read this manual before using the product and follow the instructions it contains!

GENERAL

Foreword	3
Safety instructions	3
Technical data	3
Overview of main components	4
Accessories	5
Instruction manual	5

MAINTENANCE

Troubleshooting	7
Packaging and disposal	7
Service & Contact	7
UKCA Declaration of Conformity	8

FOREWORD

Congratulations on the purchase of your new NTS80 wet-dry vacuum cleaner. This easy-to-use wet-dry vacuum cleaner is made of high quality materials, specially designed for durable and reliable use. For your own safety and to ensure correct operation of the vacuum cleaner, be sure to read and follow this instruction manual before using it. It is best to keep these operating instructions. Check the vacuum cleaner for transport damage. Damaged wet-dry vacuums must not be put into use.

The NTS80, a vacuum cleaner with plenty of power, removes dry and wet dirt and is also suitable for removing liquids.

Improper handling may result in injury or damage to the vacuum cleaner. The operator / user must ensure correct use, bearing in mind that the wet-dry vacuum cleaner is only used by instructed and authorised persons.

SAFETY INSTRUCTIONS

- Be sure to read the warning labels on the appliance and the instructions in this manual before use.
- Only operate the vacuum cleaner if you are familiar with it.
- Only use the NTS when you have checked that it is in perfect condition.
- Do not use in potentially explosive atmospheres.
- Never sit or stand on the Hoover.
- This Hoover is only suitable for 230 V AC, 50 Hz.
- Only use the original accessories supplied.
- Never place the Hoover directly next to a heater or an oven.
- Do not use harsh cleaners (scouring agents, thinner) to clean the Hoover. These could attack the plastic surface.
- This appliance is not intended for use by persons with physical, sensory or mental disabilities.
- Be sure to disconnect the mains plug from the socket before cleaning or repairing the appliance.
- If the power cord is damaged or loose, it must be replaced by the manufacturer's service department or qualified personnel.
- After using the vacuum cleaner, always disconnect the appliance from the power supply.
- Modifications and changes to the device not approved by the manufacturer will void the warranty.

TECHNICAL DATA

GENERAL

Type	Unit	Value
Model		NTS80
Size	mm	510 x 560 x 1082
Diameter	mm	440
Turning radius	mm	280
Cable length	m	7.80
Total weight	kg	32
Dust-/ wastewatertank	l	80
Length waste water hose	mm	650
∅ waste water hose	mm	40
Length Hoover hose	m	2.70
∅ Hoover hose	mm	45

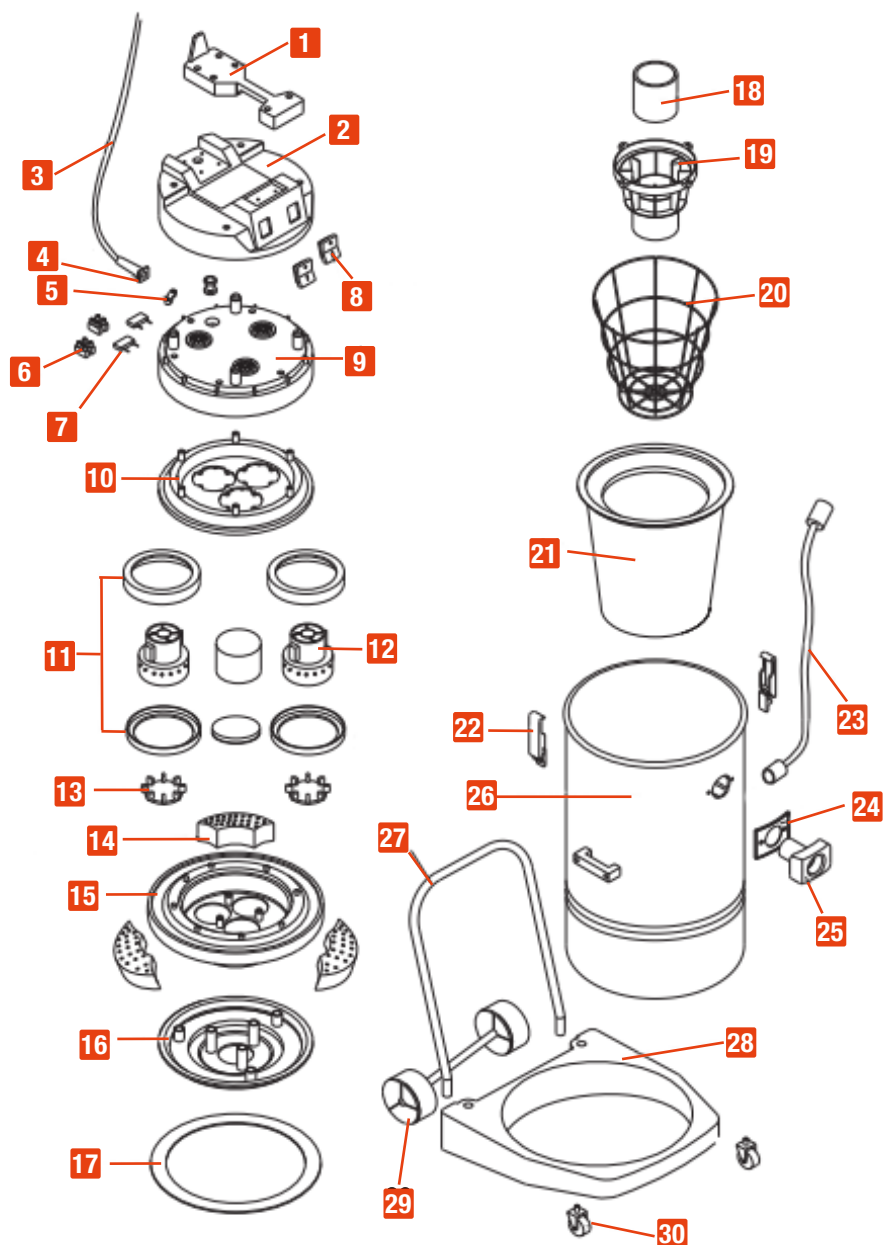
PERFORMANCE

Type	Unit	Value
Airflow	l/s	120
Suction power	mbar	250
Suction engine power	W	3 x 1000
Sound pressure level	dB (A)	80
Rated voltage	V	220 - 240
Frequency	Hz	50 - 60

OVERVIEW OF MAIN COMPONENTS

No.	Name
1	Handle
2	Cover
3	Power cable
4	Cable sheating
5	Cable clamp
6	Clamp
7	Filter capacitor
8	Switch
9	Frame
10	Engine cover
11	Engine gasket
12	Motor
13	Eight-foot-cover
14	Noise protection cover
15	Engine block

No.	Name
16	Filter
17	Base sealing ring
18	Float
19	Float holder
20	Filter frame
21	Dust filter
22	Snap lock
23	Waste water hose
24	Square seal
25	Square connection
26	Tank
27	Handle
28	Foot frame
29	Rear wheel
30	Front wheel



ACCESSORIES

No.	Name
1	Suction hose
2	Attachment holder
3	Connector
4	Steel tube
5	Dust nozzle
6	Wet nozzle
7	Flat nozzle
8	Round nozzle



NOZZLES

Together with the wet-dry vacuum cleaner, you receive various nozzles that are intended for different purposes. The nozzles can be put on the handle of the suction hose or the telescopic tube before or during vacuuming if necessary.

1. The dry nozzle is suitable for dry and dusty surfaces and is placed on the steel tube.
2. The wet nozzle is suitable for damp to wet surfaces and is placed on the steel pipe.
3. The flat nozzle is suitable for edges and joints and is attached directly to the hose.
4. The round nozzle is suitable for sensitive surfaces such as carpet or fabric furniture and can be attached to the hose.
5. Unpack the chain at the bottom of the tipping chassis. Without this, there is a risk of static charging.

INSTRUCTION MANUAL

ONE-OFF PREPARATIONS

1. Connect the suction hose and the steel pipe.
2. Insert the connector on the other side of the suction hose into the opening of the vacuum cleaner until it clicks into place.
3. Select the desired suction nozzle and attach it to the telescopic tube. The dry and wet nozzle can be plugged onto the steel tube. The flat and round nozzles are plugged directly onto the hose.
4. Check the dust filter and insert the filter if necessary. No filter is used when vacuuming large amounts of liquid.
5. Unpack the chain at the bottom of the tipping chassis. Without this, there is a risk of static charging.

OPERATE HOOVER

1. Insert the mains plug into a properly installed earthed socket.
2. Switch on the 3 motors, depending on the desired suction power, by pressing the switches on the lid.
3. Apply the nozzle to the dirty area to clean it.



Remove the dust filter if you want to vacuum larger quantities of liquid. Otherwise, the filter will become full.

PARKING AND STORAGE

1. After use, press the switches to switch off the appliance.
2. Unplug the power cable from the socket and roll it up.
3. Hang the power cable on the top of the lid from the retaining device.
4. Remove the metal tube and stow it separately.
5. Wrap the hose around the unit and attach it so that it no longer slips.
6. Store the vacuum cleaner in a protected, dry, clean and separate room so that the unit does not become a trip hazard.

EMPTYING DRY SOILING

1. Before emptying the contents, the NTS80 must be disconnected from the power circuit.
2. Place the vacuum cleaner on a flat surface and put it in front of against rolling away.
3. Detach the hose from the unit with the attached click lock.
4. Remove the cover by loosening the clips on the sides of the cover and pulling it upwards.
5. Remove the dust filter from the body of the vacuum cleaner.
6. Place a waste bag at the opening and tilt the vacuum cleaner so that the contents of the collection container empty into the bag.
7. Tilt the vacuum back into an upright position. The bag can now be disposed of.

EMPTYING LIQUIDS

1. Before emptying the contents, the NTS80 must be disconnected from the power circuit.
2. Drive the vacuum cleaner up to a sewage pipe or other suitable opening where dirty water may be disposed of.
3. Remove the waste water hose on the side of the NTS80.
4. Hold the end of the waste water hose over the opening.
5. Open the cap of the waste water hose. Hold the end of the hose over the waste water pipe until the NTS80 has been completely emptied.
6. Close the cap again and attach the waste water hose to the side of the vacuum cleaner.

CLEAN / CHANGE FILTER

1. Remove the hose from the body.
2. Open the lid by releasing the click fasteners on the sides of the lid and pulling it upwards.
3. Remove the filter.
4. Clean the filter. Wash it with a damp cloth if it is heavily soiled.
5. Insert the cleaned filter or a new one and close the lid.

TROUBLESHOOTING

Problem	Possible causes	Solution
Unit does not work	Switch On / Off not actuated	Switch on the unit
	Mains plug is not properly seated in the socket	Check that it is firmly seated
	Socket defective	Try it on another socket. Check the fuses or the circuit breaker
Unit switches off automatically	Power cable defective	Check the cable for damage. If the cable is damaged, please contact our customer service
	Brush / nozzle is clogged	Press the On / Off switch, pull out the mains plug, clean the nozzle / brush
	Motor protection filter clogged and overheating protection activated	Press the On / Off switch, pull out the mains plug, let the appliance cool down for at least 1/2 hour and clean the motor protection filter
Suction power is weak	Pipe / hose blocked	Operate the On / Off switch, pull out the mains plug, check the pipe or hose for blockages and clean if necessary
	Dust bag does not sit correctly	Insert the dust bag correctly
	Dust bag / liquid container is full	Empty container
	Brush / nozzle is not seated correctly	Place the brush / nozzle correctly
	An object clogs the nozzle	Check the respective nozzle and the pipe or hose for blockages. Remove the object
	Filters are not inserted correctly or are dirty	Insert or clean the filter correctly
Dust / water leaks from the unit	Secondary air valve is open	Close the bypass valve
	Dust bag / water container is full	Empty container
	Dust bag does not sit correctly	Insert the dust bag correctly
	Filter is not correctly inserted or dirty	Insert or clean the filter correctly

PACKAGING AND DISPOSAL

PACKAGING

The packaging and individual components are made of recyclable materials. In detail these are: Foils and bags made of PE (polyethylene), packaging made of cardboard. We recommend keeping the packaging at least during the warranty period.

DISPOSE OF WASTE EQUIPMENT

(Applicable in the European Union and other European countries with separate collection systems for recyclable materials)

Old appliances must not be disposed of with household waste!

If the appliance can no longer be used, every consumer is legally obliged to dispose of old appliances separately from household waste, e.g. at a collection point in his or her municipality / district. This ensures that old appliances are recycled properly and that negative impacts on the environment are avoided. This is why electrical appliances are marked with the adjacent symbol.



SERVICE & CONTACT

Contact our product experts and find help and solutions for your product. Here you will find all contact information listed by country and language: www.topregal.co.uk/en/service

Responsible for the content:
 TOPREGAL GmbH
 Industriestrasse 3
 70794 Filderstadt
 GERMANY
www.topregal.com

UKCA Declaration of Conformity

The manufacturer

TOPREGAL UK Ltd.
Carlton Drive Crumlin
Gwent NP11 4EA

hereby declares that the following product

Product name:

**Wet and dry
vacuum cleaner**

Type:

NTS80

Serial number:

NTS80-1000000000 - NTS80-9999999999

that the equipment is in conformity with the following relevant UK legislations and applied standards:

2014/35/EU Low Voltage Directive
2014/30/EU Electromagnetic Compatibility Directive

EN 60335-1+AC+A11+A13

EN 60335-2-2+A1

EN 60335-2-54+A1

EN 61000-3-2

EN 61000-3-3

EN 55014-1+A1+A2

EN 55014-2

Name and address of the person who is authorized, compile the technical documentation:

TOPREGAL UK Ltd.
Carlton Drive Crumlin
Gwent NP11 4EA



Place: Crumlin UK
Date: 31.03.2021

Juergen Effner
Chief Executive Officer

