



OPERATING INSTRUCTIONS

Scrubber dryer

SWM65E



Please read this manual before using the product and follow the instructions it contains!

GENERAL

Foreword	3
Definitions	3
Safety instructions	4
Technical data	4
Overview of the main components	5
Operating instructions	5

MAINTENANCE

Regular inspections	7
Checklist for maintenance / inspection	7
Troubleshooting	8
Parts list	9
Service & contact	10
EU Declaration of Conformity	11

FOREWORD

Congratulations on the purchase of your new battery-powered scrubber-dryer. The SWM65E is made of high quality materials, specially designed for durable and reliable use. For your own safety and to ensure proper operation of the cleaning device, be sure to read and follow these operating instructions before using the machine. Keep these operating instructions. Check the SWM65E for transport damage. Damaged scrubber-driers must not be pulled into use. The SWM65E is used for cleaning indoor floors without leaving any residues. Improper handling may result in injury or damage to the cleaning machine. Any liability for damage resulting from improper use of the cleaning device or disregard of the specifications and rules of conduct in this operating manual is excluded. The operator is responsible for ensuring correct use by trained and authorized personnel.

DEFINITIONS

AUTHORIZED PERSON

Trained and instructed personnel who use this machine, prepare it for use and provide appropriate, as well as sufficient instructions for operators. These instructions refer to:

1. Mechanics and auxiliary equipment of the device
2. Maintenance of fluid quality and filter changes
3. Causes and prevention of accidents
4. Tasks of the setter
5. Operation

OPERATOR

Trained personnel authorized by the authorized person to use this machine, among other things, for safe use, setup, maintenance, cleaning, avoiding all hazards. Hazards include, but are not limited to driving without sufficient visibility, and disregarding safe travel routes.

INTENDED USE

Use of this machine in accordance with the information provided in these operating instructions.

CLEANING DEVICE

This battery-powered scrubber dryer, with the accessories provided.

PEE

Personal protective equipment, such as safety glasses, hearing protection, safety shoes, protective gloves, protective clothing, etc.

REASONABLY FORESEEABLE MISAPPLICATION

Use of this device in a manner not intended by the constructor, but which may result from readily foreseeable human behavior.

TARGET GROUP

Group of persons for whom these operating instructions are intended by the manufacturer (authorized representative, operator).

SAFETY INSTRUCTIONS

- Use the machine indoors only. Do not expose the machine to precipitation.
- Only allow trained personnel to operate the cleaning device.
- Only adults in full possession of their physical and mental faculties may operate the cleaning device.
- Use only original spare parts and accessories for maintenance and repair
- Charge the batteries in a dry and well ventilated room. Escaping gases can ignite in a confined space. Therefore, do not cover the ventilation when charging.
- Switch off the device before maintenance or repair and disconnect the battery. The installed motors and moving parts can cause injuries.
- Battery acid can cause injuries to skin and eyes. Wear appropriate protective clothing and safety glasses when handling the batteries.
- Keep electrical parts away from moisture and do not touch electrical parts with wet hands.
- Keep loose clothing and hair away from moving parts.
- Make sure that the main switch is set to off before changing the pad or brush.
- Only park the machine on level ground. Secure it against rolling, if this is not possible.
- Do not place the device in rooms where temperatures may fall below freezing point, as this will damage the nozzles and lines.

TECHNICAL DATA

GENERAL

Type	Unit	Value
Brand		wipeket
Model		SWM65E
Net Weight	lbs	238.1
Battery Weight	lbs	2 x 73.9
Fresh Water Tank	gal	17.17
Waste Water Tank	gal	14.53

DIMENSIONS

Type	Unit	Value
Chassis width	"	19
Depth	"	50
Height	"	40.94
Wiper Bar Width	"	31.5
Brush Disc Diameter	"	18
Splash guard diameter	"	21.65
Pad diameter	"	20

PERFORMANCE

Type	Unit	Value
Cleaning Performance	ft ² /h	23.680
Brush Speed	rpm	130
Brush Pressure	lbs	55.12
Suction Engine Power	W	500
Brush Engine Power	W	550
Noise Level	dB (A)	73
Rated Voltage Battery	V	2 x 12
Charging time	h	8
Running time	h	4

OVERVIEW OF THE MAIN COMPONENTS



No.	Description
1	Fresh water tank lid
2	Waste water tank lid
3	Handle
4	Cleaning Brush
5	Main Wheel
6	Support Wheel
7	Wiper bar
8	Water level indicator
9	Waste water hose
10	Control panel

No.	Description
11	Operating hours display
12	Keyhole
13	Socket for charger
14	Wiping bar handle
15	Cleaning brush pedal
16	Leveling rollers
17	Battery indicator
18	Suction engine switch
19	Brush engine switch
20	Valve for spray water quantity



OPERATING INSTRUCTIONS

BEFORE FIRST USE

1. Open the upper flap of the cleaning machine.
2. Connect the battery to the machine. You find the two power cables in the chassis.
3. Check the machine for transport damages. Damaged cleaning machines must not be put into use.
4. Perform a complete functional test.

SWITCHING ON THE DEVICE

1. Turn the key in the keyhole (12) to start the machine.
2. Check the battery status (17) and the water level (8).
3. Press the switches one after the other to activate the brush (19) and suction engine (18).

LOWERING AND LIFTING THE BRUSH

1. Gently press the brush pedal (15) to release the brush and allow it to move slowly upwards to lower the cleaning brush.
2. Press the brush pedal (15) until it locks into place to lift the brush.



Don't start the brush engine, while the brush is lifted up. It will be removed automatically.

LOWERING AND LIFTING THE WIPER BAR

1. Press the lever (14) down to lower the wiper bar (7).
2. Pull the lever (14) upwards to lift the wiper bar (7).

ADJUSTING THE WATER QUANTITY

1. Turn the valve for spray water quantity (20), beside the water level indicator (8) clockwise to reduce the spray water quantity.
2. Turn the valve for spray water quantity (20), beside the water level indicator (8) counterclockwise to increase the spray water quantity.

CLEANING WITH THE MACHINE

1. Lower the brush (4) and wiper bar (7).
2. Set the required water quantity.
3. Switch on the machine and activate the engines one after the other.
4. Drive with the machine over dirt to remove it. The brush removes the dirt from the surface. The wiper bar sucks the loosened dirt together with the water from the surface.
5. If water remains on the floor, switch off the water supply of the machine and drive over the water again with the suction motor switched on.



The engines can be switched on individually and allow wet and dry cleaning of different surfaces. Also the water supply can be regulated easily.

CHARGING THE BATTERY

1. For better ventilation of the batteries during the charging process, open the waste water tank.
2. Connect the charging cable of the charger to the socket at the rear of the machine (13) and the other connection to a 110 V socket.
3. The charger automatically starts charging the machine.
4. The charger indicates the current battery status of the device with the flashing light.

INSTALLING THE WIPER BAR

1. Put the wiping bar handle (14) in the upper position and fix it there.
2. Guide the wiper bar (7) to the suspension of the swivel arm and thread the screws into the recesses.
3. Tighten the fixing screws of the wiper strip hand-tight.
4. Adjust the wiper bar to an appropriate height by turning the screws of the leveling rollers (16).
5. Plug the waste water hose (9) onto the nozzle of the wiper bar (7). Make sure that it is firmly seated.

REPLACING THE CLEANING BRUSH

1. Lift the cleaning brush (4) by stepping on the brush pedal (15) at the rear of the machine.
2. Remove the splash guard, which is located above the brush.
3. Turn the cleaning brush (4) counterclockwise to release it.
4. Take the new cleaning brush / pad and put it under the plate.
5. Turn the cleaning brush clockwise to attach it to the plate.
6. Put the splash guard back on.

FILLING THE FRESH WATER TANK

1. Fill the fresh water tank with the required amount of fresh water. The tank holds a maximum of 17.17 gal. The fill level can be read off the water level indicator (8).
2. Add a detergent.

EMPTYING THE WASTE WATER TANK

1. Move the machine to a gully cover or other drain for waste water.
2. Open the valve of the waste water tank to release the waste water.
3. If necessary, tilt the machine to empty the waste water tank completely.

REGULAR INSPECTIONS

BATTERY MAINTENANCE

1. Clean the connections to the battery regularly with a damp cloth, to reduce the risk of oxidation.
2. Keep the battery exterior clean. Always clean up the dust and dirt on the battery cover.
3. Only store in well tempered (68 °F) rooms. Charge the battery regularly during longer periods of non-use to avoid deep discharge.
4. Charge the battery.

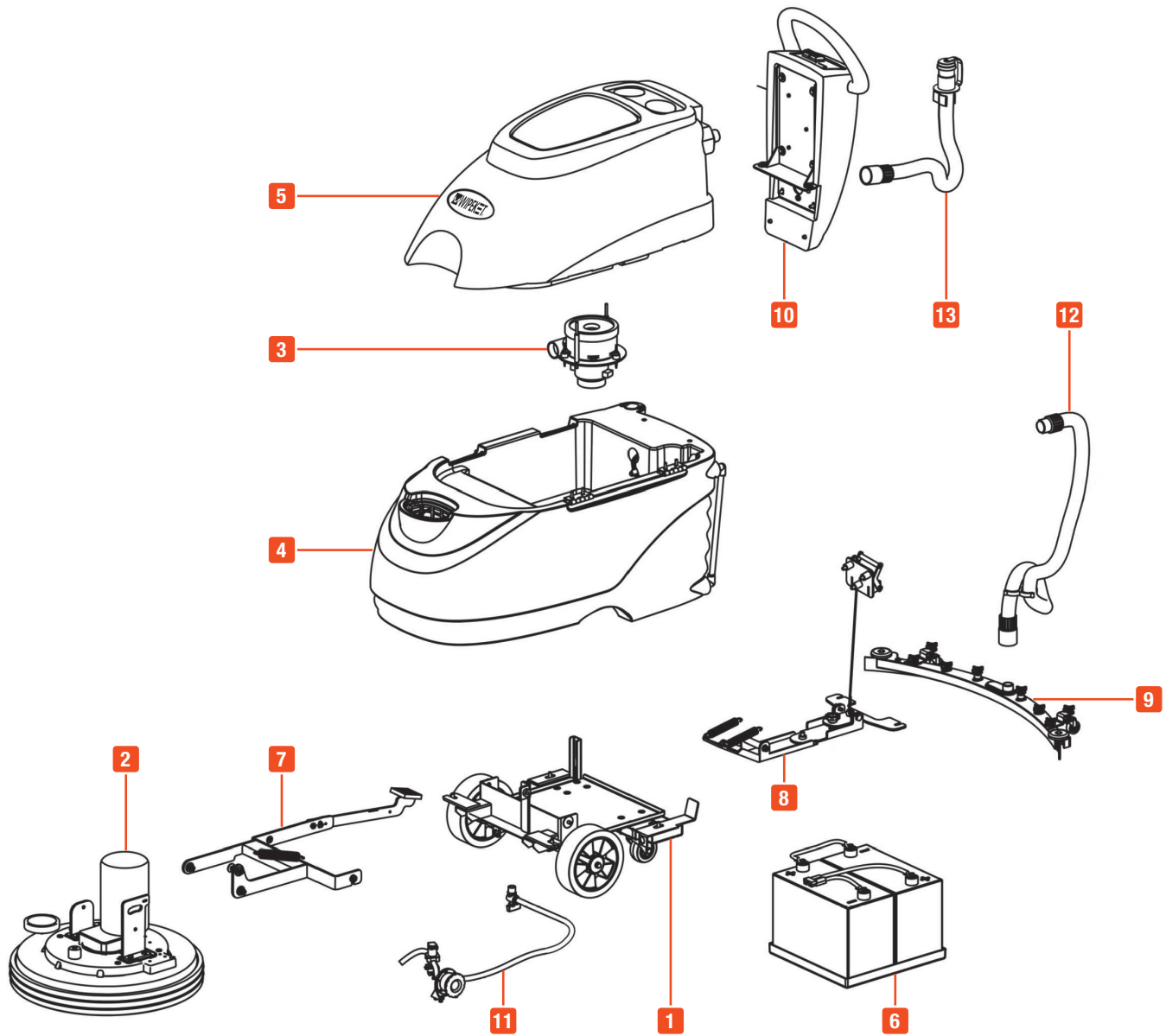
CHECKLIST FOR MAINTENANCE / INSPECTION

No.	Component / action	Timely interval		
		Daily	Monthly	Annually
1	Empty and clean the waste water tank	•		
2	Remove the wiper strip, rinse and dry it. Check the pipe for dirt or deposits	•		
3	Clean the tops of the batteries with an ammonia-based window cleaner	•		
4	Charge the batteries as described	•		
5	Lubricate the lifting mechanisms with light oil		•	
	Check whether the clutch disc, brushes, linings or squeegee blades are worn or damaged		•	
	Clean the battery connections and lubricate them		•	
	Check the electrical connections and reattach them if they are loose		•	
	Clean the machine with an all-purpose cleaner		•	

TROUBLESHOOTING

Problem	Cause	Solution
The machine does not start	Fuse is out	Replace the fuse
	Battery is empty	Charge or replace the battery
	Connection between battery and engine is loose	Check the power connection
	Switch is damaged	Replace the switch
Brush does not rotate	Battery is empty	Charge or replace the battery
	Connection between battery and engine is loose	Check the power connection
	Switch is damaged	Replace the switch
	Debris in the brush head	Clean the brush head
The suction engine does not work	Battery is empty	Charge or replace the battery
	Connection between battery and engine is loose	Check the power connection
	Switch is damaged	Replace the switch
	The waste water tank is full	Empty the waste water tank
There comes no water out of the valve, when cleaning	Wiper lips are incorrectly aligned	Check the alignment of the wiper lips
	The fresh water tank is empty	Refill the fresh water tank
	The hose is blocked	Clean the hose. Check the floater inside the waste water tank. It's possible that it is blocked by dirt
	The valve for water regulation is closed	Open the valve
	The valve is broken	Replace the valve
The suction power is low while cleaning	Sealing ring and / or sealing strip are broken	Replace one or both of the components
	The waste water hose is blocked or damaged	Check the waste water hose
	The filter is blocked	Check the filter and clean it if necessary
	The cover of the waste water tank is not closed properly	Close it firmly
Water comes out of the fresh water hose, after turning off the machine	The valve is still opened	Close the valve for the fresh water regulation
Wiper bar leaves stripes on the floor	There are small stones on the wiper lip	Clean the wiper lip with a cloth
	The wiper lips are porous or damaged	Replace the wiper lips
	Floor is not properly swept before cleaning	Sweep the Floor before cleaning with the machine
The batteries cannot be charged	The batteries are damaged	Batteries must be replaced
	The charger is damaged	Charger needs to be serviced or replaced
	The battery is deeply discharged	Charge the batteries longer. Replace the batteries
The floor is not scrubbed or stripped properly	Brush motor is damaged	Have the machine serviced
	Excessive wear of the brush	Replace the brush
	The vehicle is driven too fast over dirty areas	Drive slowly over particularly dirty areas

PARTS LIST



No.	Description
1	Chassis
2	Brush engine
3	Suction engine
4	Fresh water tank
5	Waste water tank
6	Batteries
7	Brush lifting assembly

No.	Description
8	Wiping bar lifting assembly
9	Wiping bar
10	Control panel
11	Valve filter
12	Waste water hose
13	Waste water tank hose

SERVICE & CONTACT

Contact our product experts and find help and solutions for your product. Here you will find all contact information listed by country and language: www.topregal.us/en-us/service

Responsible for the content:
TOPREGAL US Corp.
729 North Route 83, Suite 309
Bensenville, IL 60106
United States of America
www.topregal.us

EU Declaration of Conformity

The manufacturer / distributor

TOPREGAL US Corp.
729 North Route 83
Suite 309
60106 Bensenville, IL
USA

hereby declares that the following product

Product designation: **wipeket Scrubber dryer** Type: **SWM65E**

Serial number:
SWM65E-1000000000-SWM65E-9999999999

complies with all relevant provisions of the applicable legal regulations (hereinafter) - including their amendments in force at the time of the declaration. The sole responsibility for issuing this declaration of conformity lies with the manufacturer. This declaration refers only to the machine in the condition in which it was placed on the market; parts and / or interventions subsequently fitted by the end user are not taken into account.

Conforms to the provisions of the following European directives:

2006/42/EC Machinery Directive
2014/35/EU Low Voltage Directive
2014/30/EU Electromagnetic Compatibility

Conforms to the provisions of the following standards:

EN ISO 12100	EN 55014-2
EN 60335-1	EN 61000-6-2
EN 60335-2-72	EN 61000-6-3
EN 60335-2-29	EN 61000-3-2
EN 62233	EN 61000-3-3
EN 55014-1	

Name and address of the person who is authorized, compile the technical documentation:

TOPREGAL US Corp.
 729 North Route 83
 Suite 309
 60106 Bensenville, IL
 USA



Place: Bensville
 Date: 12-07-2022

Juergen Effner
 Chief Executive Officer

