



## ASSEMBLY INSTRUCTIONS

Working platform



Please read this manual before using the product and follow the instructions it contains!

## GENERAL

Foreword	3
Safety instructions	3
Technical data	3
Overview of the main components	4
Operating instructions	4

## MAINTENANCE

Regular inspections	4
Parts list	5
Service & Contact	5
EU Declaration of Conformity	6

## FOREWORD

Congratulations on the purchase of your new working platform. This working platform is made of high quality materials, specially designed for durable and reliable use. For your own safety and for the correct operation of the working platform, it is essential that you read and observe these operating instructions before commissioning. Keep these operating instructions.

Check the item for transport damage. Damaged working platforms must not be put into use. The working platform is used to be lifted by a forklift truck so that employees can reach high installation sites. Improper handling may result in injury or damage to the basket. SolidHub is not liable for damages resulting from the improper use of the working platform, or the disregard of specifications and rules of conduct of this operating manual. The operator / user must ensure the correct use of the working platform by trained and authorized personnel.

## SAFETY INSTRUCTIONS

- Read these operating instructions carefully and observe the safety instructions described therein.
- Only healthy adults who have been previously instructed in the operation of the working platform may use it.
- A safe distance must be maintained when the working platform is lifted. Do not stand under the working platform when it is raised.
- Wear suitable protective clothing, such as gloves, a helmet and safety shoes, when using the working platform.
- The forklift operator must not leave the forklift while persons are in the raised working platform.
- Do not drive the forklift while there are persons in the raised working platform.
- Before using the working platform, check whether the forklift used is suitable for carrying it. It should be able to carry at least 1.65 tons of load.
- Do not allow more than two people to work in the working platform at the same time.
- Maintain the working platform at regular intervals, paying particular attention to damage to the rod and rust.
- Secure the working platform against slipping before lifting it.
- Modifications to the working platform not approved by the manufacturer may cause risks. The manufacturer is not liable for accidents that occurred as a result of unauthorized modification.
- Store the working platform on a level surface and apply the locking brakes to secure it against rolling away.
- Observe the accident prevention regulations.
- Do not work in the immediate vicinity of overhead electric lines (<118,11" distance).
- The lifting height must not exceed 196,85 ".
- Do not enlarge the platform with boards or panels under any circumstances.
- Modifications and changes to the device not approved by the manufacturer will void the warranty.

## TECHNICAL DATA

### CHARACTERISTICS

Type	Unit	Value
Brand		SolidHub
Colour		RAL 5005
Material		Steel
Surface		Painted
Load	lbs	793.66
Weight	lbs	147.71
Surface	"	37.40 x 37.40
Height (back wall of grid)	"	76.77
Dimensions fork suspension	"	7.48 x 3.15
1 package (packed in wooden box) dimensions	"	38.58 x 38.58 x 11.81

## OVERVIEW OF THE MAIN COMPONENTS

No.	Description
1	Safety grid
2	Basket rod
3	Wheel
4	Safety chain
5	Locking brake



## OPERATING INSTRUCTIONS

1. Drive a forklift into the fork pockets.
2. Secure the working platform against slipping by pulling the safety chain behind the forks and fastening it.
3. Drive the working platform to the place of use.
4. Enter the working platform through the access provided. When closing the door, make sure that it is securely closed again before lifting the working platform.
5. Ensure that the persons in the working platform can communicate with the forklift operator at all times.
6. Raise the working platform slowly, paying attention to obstacles in the lifting area.
7. Use the floor of the working platform to place objects. Do not place them on the railing under any circumstances.
8. Slowly lower the working platform again when the work is completed.



Work in such a way that persons are not endangered either on the working platform or in the immediate vicinity.

## REGULAR INSPECTIONS

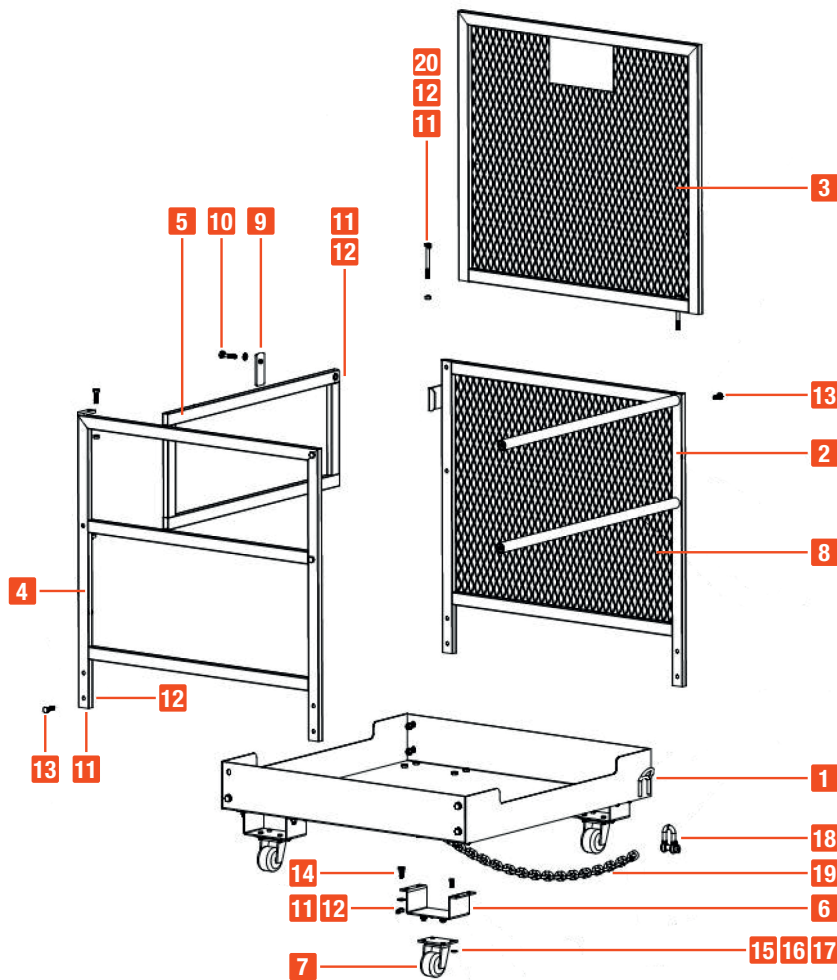
Check the following components before each use:

- Wheels and wheel suspension
- Railing bars
- Door latch
- Components relevant to securing, such as securing chains
- Bolted joints and welds
- Forklift pockets



Check the entire rod as well as weld seams and bolts for corrosion at regular intervals. Corroded parts of the working platform can pose a risk of injury and impair the load-bearing capacity of the frame.

## PARTS LIST



No.	Article	Quantity
1	Frame	1
2	Rear railing	1
3	Mesh safety grating	1
4	Front railing	1
5	Door	1
6	Forklift bag	4
7	Wheel	4
8	Side railing	2
9	Door lock	1
10	Screw M10 x 50	1
11	Washer Ø 10 mm	27
12	Lock nut (M10)	27
13	Screw M10 x 35	13
14	Screw (M10 x 20)	16
15	Screw (M8 x 16)	16
16	Washer Ø 8 mm	16
17	Lock nut (M8)	16
18	D- Shackle	2
19	Chain	1
20	Screw M10 x 100	2

## SERVICE & CONTACT

Contact our product experts and find help and solutions for your product. Here you will find all contact information listed by country and language: [www.topregal.us/en-us/service](http://www.topregal.us/en-us/service)

Responsible for the content:  
 TOPREGAL US Corp.  
 729 North Route 83, Suite 309  
 Bensenville, IL 60106  
 United States of America  
[www.topregal.us](http://www.topregal.us)

# EU Declaration of Conformity

The manufacturer

**TOPREGAL US Corp.  
729 North Route 83  
Suite 309  
60106 Bensenville, IL  
USA**

hereby declares that the following product

Product designation:

**Working platform**

Type:

**AK360**

Serial number:

**AK360-1000000000-AK360-9999999999**

complies with all relevant provisions of the applicable legal regulations (hereinafter) - including their amendments in force at the time of the declaration. The sole responsibility for issuing this declaration of conformity lies with the manufacturer. This declaration refers only to the machine in the condition in which it was placed on the market; parts and / or interventions subsequently fitted by the end user are not taken into account.

Conforms to the provisions of the following European directives:

**2006/42/EC Machinery Directive**

Conforms to the provisions of the following standards:

**EN ISO 12100**

**EN 280**

**EN 60204-1**

Name and address of the person who is authorized, compile the technical documentation:

TOPREGAL US Corp.  
729 North Route 83  
Suite 309  
60106 Bensenville, IL  
USA



Place: Bensenville  
Date: 12-08-2021

Juergen Effner  
Chief Executive Officer



# SolidHub