

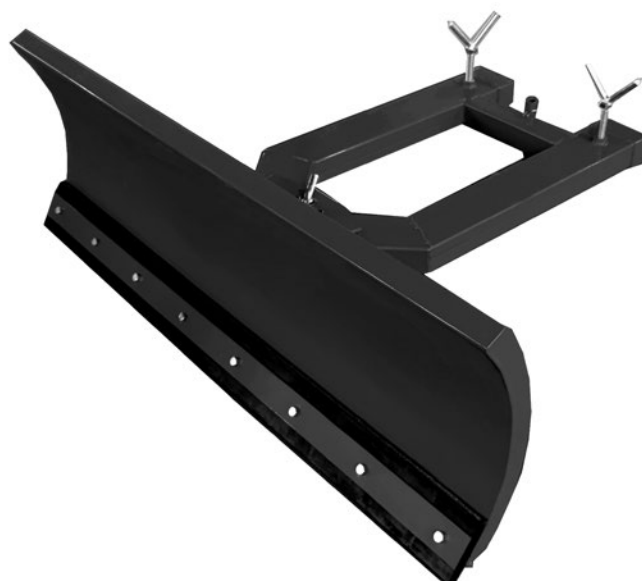
SNOW PLOUGH FOR FORKLIFT TRUCK

CHARACTERISTICS

- With the snow pusher you can turn your forklift into a snow removal vehicle.
- Fast clearing of large areas, thanks to the working width of 1500 mm.
- Angle adjustable in 5 steps allows flexible use, in different conditions.
- The robust rubber lip on the lower edge of the snow blade is replaceable and makes clearing without residue possible.

GENERAL

| Type | Unit | Value |
|----------------------------|------|-------------------|
| Dimensions | mm | 1500 x 1067 x 480 |
| Weight | kg | 70 |
| Blade material | | Steel |
| Slider material | | Rubber |
| Material thickness | mm | 4.5 |
| Forklift pockets | mm | 112 x 52 |
| Distance forklift pockets | mm | 300 |
| Height to forklift pockets | mm | 212 |



COMPATIBLE STACKER

| Type | Unit | Value |
|------------------|------|-------|
| Load | kg | 2000 |
| Adjustable forks | | Yes |

