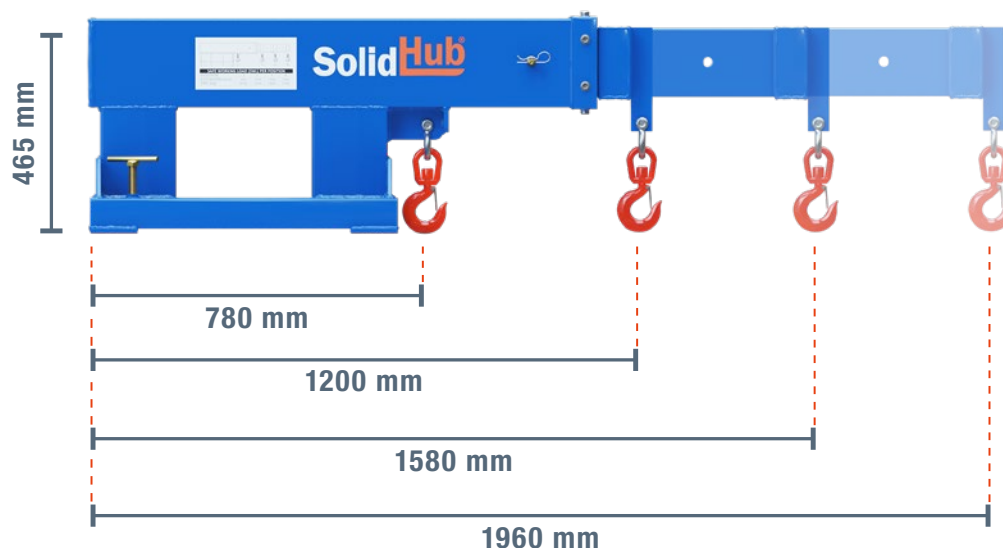


CRANE ARM WITH A MAXIMUM LOAD OF 4750 KG

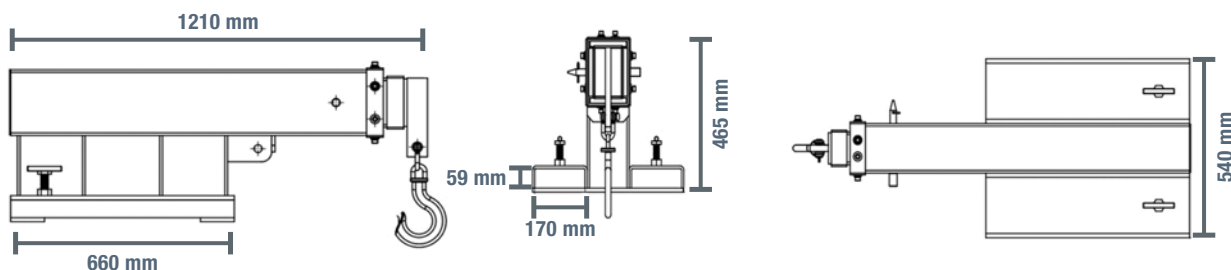
CHARACTERISTICS

- Grip and transport heavy loads easily from above.
- Turn your forklift into a mobile crane in the blink of an eye.
- The crane arm can be extended in 4 positions.
- Secured with 2 screw clamps.

Type	Unit	Value
Brand		SolidHub
Colour		RAL 5005
Surface		Painted
Length	cm	121
Width	cm	54
Height	cm	47
Poids	kg	129
Max. load	kg	4750
Size of fork openings	mm	170 x 59



Safe working load per position				
Extension (mm)	780	1200	1580	1960
Safe working load (Kg)	4750	2400	1800	1500



Note that the use of the telescopic arm shifts the load center of your forklift. For more detailed information, refer to the heavy load diagram and the load center of your equipment.