



OPERATING INSTRUCTIONS

Materiallift

ML400/3



Please read this manual before using the product and follow the instructions it contains!

GENERAL

Foreword	3
Definition	3
Warnings used	4
Safety instructions	4
Technical data	5
Main components at a glance	5
Operating instructions	5

MAINTENANCE

Maintenance	7
Troubleshooting	8
Service & Contact	8
UKCA Declaration of Conformity	9

FOREWORD

Congratulations on the purchase of your new ML400/3 Materiallift. The ML400/3 has been manufactured from high quality materials, specially designed for durable and reliable use. For your own safety and to ensure correct operation of the assembly lift, be sure to read and follow these operating instructions before using it. Keep these operating instructions. Check the ML400/3 for transport damage. Damaged lifting equipment must not be put into use. The ML400/3 Materiallift is used to lift loads to a height of up to 3.5 m and then mount objects with a max. weight of 400 kg. Improper handling may result in injury or damage to the unit. Any liability for damages resulting from the improper use of the ML400/3, or the disregard of specifications and rules of conduct of this operating manual is excluded. The operator is responsible for ensuring correct use by trained and authorised personnel. The accident prevention regulation BGV-D27 must be observed.

DEFINITION

COMMISSIONER

Trained and authorised personnel who use this equipment, prepare it for use and provide appropriate and sufficient operator training. These instructions refer to:

1. Mechanics and additional equipment of the machine
2. Causes and prevention of accidents
3. Tasks of the operator
4. Operation

OPERATOR

Trained personnel authorised by the operator to use this equipment for safe use, set-up, maintenance, cleaning, etc., avoiding all hazards. Hazards include lifting a load in excess of the max. load, lifting a load without unfolding the front legs and positioning on uneven and excessively soft surfaces.

INTENDED USE

Use this appliance in accordance with the information provided in these operating instructions.

DEVICE

This assembly lift with additional equipment and accessories.

PSA

Personal protective equipment, such as hard hats, safety shoes, protective gloves, protective clothing, etc.




REASONABLY FORESEEABLE MISAPPLICATION

Use of this appliance in a manner not intended by the designer but which may result from readily foreseeable human behaviour.

TARGET GROUP

Group of persons for whom these operating instructions are intended by the manufacturer (authorised representative, operator).

WARNINGS USED

No.	Warning	Explanation
1		Danger to life and health of persons.
2		Beware of suspended loads.
3		Caution, electrical voltage.

SAFETY INSTRUCTIONS

- Observe and implement the safety instructions attached to the Materiallift.
- This manual should be attached to the unit at all times and in a position that is clearly visible to the operator.
- The Materiallift must not be operated until the operating instructions have been fully read and understood and the machine is free from defects.
- The unit must only be used for its intended purpose. Never use it as a personnel lift.
- Only lift loads that do not exceed a maximum weight of 400 kg.
- Always check the working area before use. Never work on slippery, unstable or uneven surfaces. The machine must be on a firm and level surface.
- Before lifting a load, the side outriggers and legs must be fully lowered and locked. All castors must be in full contact with the ground.
- Safety bolts must not be removed under any circumstances while the Materiallift is loaded.
- To prevent the load from falling, the load must rest centrally on the load fork.
- Operation in strong or gusty winds is not permitted. The additional load caused by wind can make the Materiallift unstable.
- Lifting or lowering a fixed or overhanging load may cause a horizontal force or side load situation and is strictly prohibited.
- Uneven and dirt-covered surfaces must be avoided while rolling the lift in transport position. There is a risk of slipping.
- The housing is not electrically insulated and does not provide protection if the unit comes into contact with electric current. Do not go near the machine if it comes into contact with power lines.
- Do not stand under lifted loads.
- Check the room to move before lifting or lowering a load.
- Always hold the outriggers when the locking pins are removed. The outrigger may fall uncontrollably and cause injury.
- Always hold the handles of the hand crank very firmly until the brake is completely locked. The brake is locked during loading and prevents the handles of the hand crank from turning.
- The pin must be pushed firmly into the forks before lifting loads.
- Keep hands and other extremities away from moving parts. This includes in particular the rotating gears on the crank.
- Lubrication of the winch should be maintained at all times. Never oil or grease the brake mechanism.

TECHNICAL DATA

GENERAL

Type	Unit	Value
Max. Load	kg	400
Net weight	kg	145
Lifting function		Manual winch

TRANSPORT DIMENSIONS

Type	Unit	Value
Mast height	mm	2050
Width	mm	720
Length	mm	770

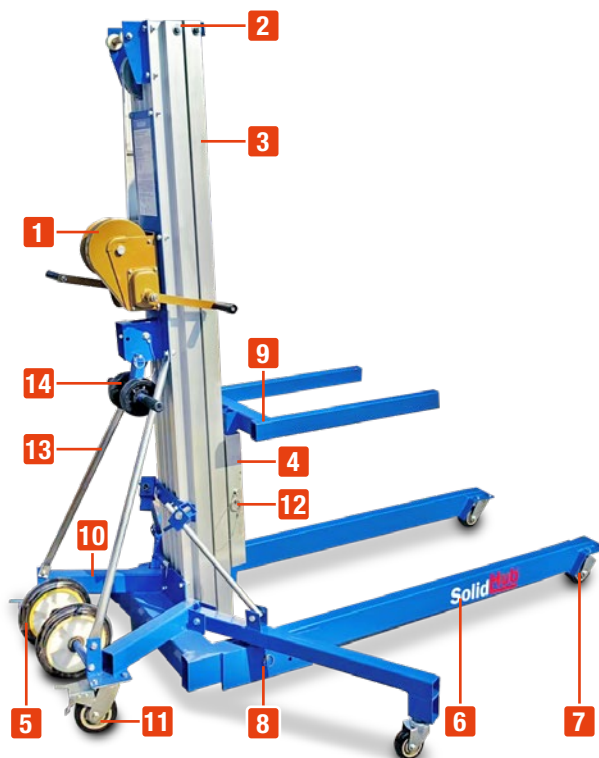
LOAD FORK

Type	Unit	Value
Length	mm	720
Width	mm	510

OPERATING DIMENSIONS

Type	Unit	Value
Chassis height	mm	2050 - 3500
Chassis length	mm	2100
Chassis width	mm	760
Width with side outriggers	mm	1800

MAIN COMPONENTS AT A GLANCE



No.	Name
1	Cable winch with hand crank
2	Cable
3	Mast
4	Carriage
5	Transport wheels
6	Front legs
7	4 x swivel castors
8	Safety pin
9	Load fork
10	Chassis
11	2 x swivel castors with parking brakes
12	Locking pin
13	Brace
14	Steering handles with castors

OPERATING INSTRUCTIONS



Always carry out a function test before putting the Materiallift into operation. All machine functions and equipment parts must be checked for functionality. If any parts are damaged, loose or missing, the Materiallift must not be used under any circumstances and must be repaired by qualified personnel.

COMMISSIONING

1. Pull out the locking pin on the front leg and carefully lower the leg to the fully down position. Push the locking pin back through the leg and the chassis. The castors must rest firmly on the ground.
2. Apply some pressure to the side outrigger and carefully lower it to the ground. Check that the side outriggers are locked in the fully lowered position and that the castors rest firmly on the ground.
3. Attach the load fork and insert the socket pin sideways. Secure the socket pin with the associated R-clip.
4. Check that the steel cable is wrapped around the drum when the load fork is in the fully lowered position. Otherwise, the maximum weight of 400 kg cannot be lifted.
5. Check the winch. Position a weight on the load fork and turn the crank handle towards the mast. The crank must move smoothly.
6. To check the winch brakes, turn the hand crank away from the mast and lower the load fork. After you have reached the desired position, turn the crank minimally back towards the mast, the brakes should now engage.
7. Check that the mast sections all go up in the correct order. When lowering, the sequence must be reversed.

LOAD CHART

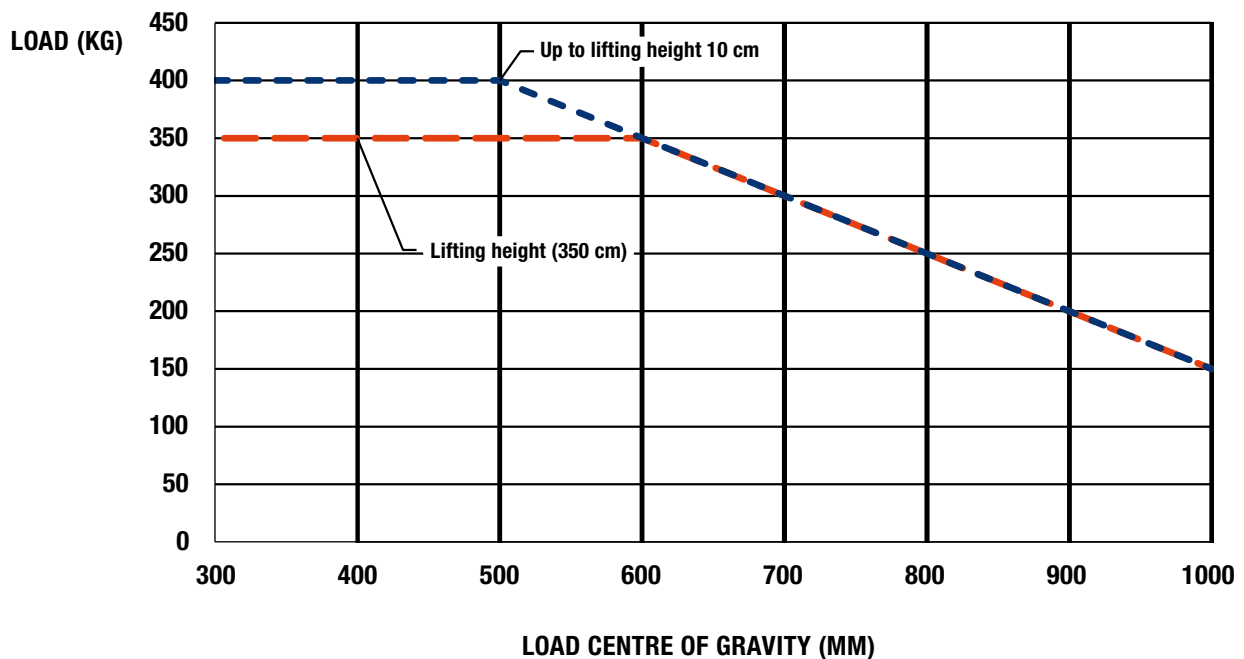
To avoid injury,

- position the load on the assembly lift according to the instructions,
- the load must not exceed the maximum weight,
- pay attention to the load's centre of gravity.

Example:

The load capacity is 350 kilograms, with a height of 3.5 metres. The load centre of gravity is 400 millimetres from the back of the fork. If the weight or the load centre of gravity is exceeded, the assembly lift threatens to tip over.

The respective load fork diagram is part of the „original manufacturer's operating instructions“.




		Load centre of gravity			
mm		400	600	800	1000
3,5 m	kg	350	350	250	150

OPERATION

1. Setting up

- 1.1 A firm and level surface must be chosen for the assembly. Position the Materiallift in such a way that it is stable and secure. The area must be free of obstacles that could hinder the operation of the Materiallift. Apply the two parking brakes.
- 1.2 Apply some pressure to the side boom and lower it completely to the ground. The castors must rest firmly on the ground. Repeat this for the second side boom.
- 1.3 Pull out the locking pin first on one of the front legs and place this on the ground. Insert the the locking pin back into the front leg. Repeat this on the second front leg. The castors must rest firmly on the ground.
- 1.4 Remove the fork pin and mount the fork on the carriage of the retracted mast. Insert the fork pin the fork pin back through the carriage and the load fork. Secure the fork pin with the corresponding R-clip.

2. Lifting and lowering loads

 **WARNING:** The load must always be secured against slipping and falling!

- 2.1 Loads are moved upwards in a clockwise direction by turning the crank handle. If the crank is turned back counterclockwise a minimum turn, braking takes place and the load is held at the height.
- 2.2 To lower the load, turn the crank clockwise a minimum turn, the brake will release, then continue turning counterclockwise.
- 2.3 Loads must be centred on the load fork and in strict accordance with the load chart given in this manual.
- 2.4 Ensure that the load has been correctly positioned and secured.

3. Instructions for load positioning on forks

- 3.1 The load's centre of gravity is half the length of the load.
- 3.2 Determine the exact weight of the load and the load centre of gravity.
- 3.3 Using the load diagram, check that the unit is able to lift the weight at the proposed location on the forks.
- 3.4 Position the load on the forks so that it is as close as possible to the carriage.
- 3.5 Make sure that the load is fully attached to the forks.

4. Storage after use

To keep the unit in first class condition, a safe storage location should be chosen, with a firm and level surface, providing good protection from bad weather and avoiding impact damage etc. from other vehicles and machinery.

TRANSPORT

Before transporting the Materiallift, ensure the following:

1. The Materiallift was completely folded up and secured with safety pins and socket bolts.



In order to be able to raise the side outriggers again, you must press the metal plates at the rear end of the outrigger down against the spring and push the outrigger upwards by hand. This is the only way to raise the side outriggers again.

2. Make sure you always have a clear field of vision in the direction of transport. To avoid accidents, there must be no persons in the driving area.
3. During transport, pay attention to the permissible floor load.
4. The transport vehicle or trailer must stand on a firm and level surface.
5. The assembly lift must be secured with chains or straps in the transport vehicle or on the trailer without exception.

MAINTENANCE

COMPLETENESS CHECK

Within the scope of the completeness check, it is checked whether all necessary components are completely available.

FUNCTIONAL TEST

Before each use, carry out the function test described in the section "Commissioning".

ANNUAL AUDIT

Depending on the operating conditions and conditions of use, the assembly lift should be inspected by an expert. Wear parts and safety parts must be replaced if necessary.

EXTRACT FROM DGUV REGULATION 100-500:

1.9 EXAMINATIONS

According to §3 (3) of the Ordinance on Industrial Safety and Health, the employer must determine the type, scope and intervals of the required inspections of work equipment.

The employer also specifies the requirements that the persons appointed by him must fulfil (competent persons). According to current opinion, it can be assumed that the tasks of the competent persons for the tests listed below are performed by the persons named there. The type, scope and intervals of the inspections are current practice and correspond to the rules of technology.

1.9.1 REGULAR EXAMINATIONS

Lifting platforms must be inspected by an expert at intervals of no more than one year after they have been put into operation for the first time. An expert is someone who has sufficient knowledge in the field of lifting platforms due to his professional training and experience and is familiar with the relevant state regulations, accident prevention regulations and generally recognised rules of technology (e.g. BG rules, DIN standards, VDE regulations, technical rules of other member states of the European Union or Turkey or other contracting states of the Agreement on the European Economic Area) to such an extent that he is able to assess the operationally safe condition of lifting platforms.



It is mandatory to carry out an inspection of all individual parts at least once a year.

TROUBLESHOOTING

Problem	Reason	Solution
Mast sections do not go up in the correct order	The wire rope has jumped from the pulley	Repair the wire rope, if necessary have it replaced by a specialist
	Defective rollers or roller bearings	Replace defective component
	Dirt is between the mast parts or the rollers	Remove dirt, regularly check the assembly lift for impurities
	Overload or one-sided strain	Do not overload the assembly lift, ensure correct loading

SERVICE & CONTACT

Contact our product experts and find help and solutions for your product. Here you will find all contact information listed by country and language: www.topregal.co.uk/en/service

Responsible for the content:
 TOPREGAL GmbH
 Industriestrasse 3
 70794 Filderstadt
 GERMANY
www.topregal.com

UKCA Declaration of Conformity

The manufacturer / distributor

TOPREGAL UK Ltd.
Carlton Drive Crumlin
Gwent NP11 4EA

hereby declares that the following product

Product name:

SolidHub
Materiallift

Type:

ML400/3

that the equipment is in conformity with the following relevant UK legislations and applied standards:

2006/42/EC Machinery Directive

Applied standards:

EN ISO 12100
EN 60204-1
EN 280

Name and address of the person who is authorized, compile the technical documentation:

TOPREGAL UK Ltd.
Carlton Drive Crumlin
Gwent NP11 4EA



Place: Crumlin UK
Date: 03.01.2023

Juergen Effner
Chief Executive Officer

SolidHub