

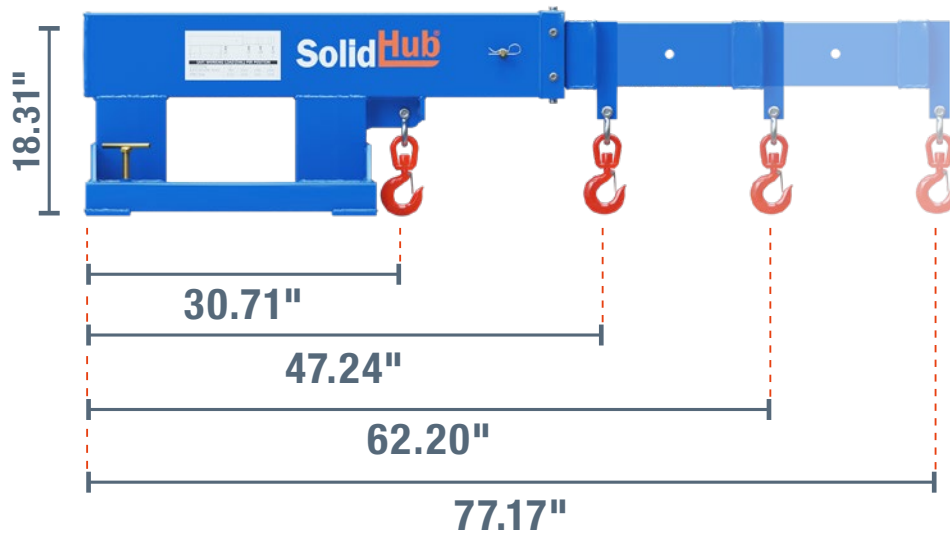
CRANE ARM WITH A MAXIMUM LOAD OF 10,471.96 LBS

CHARACTERISTICS

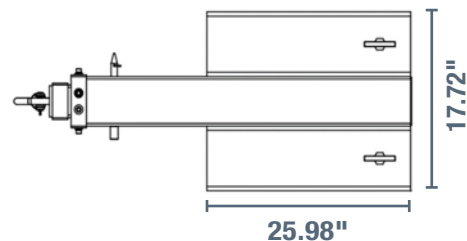
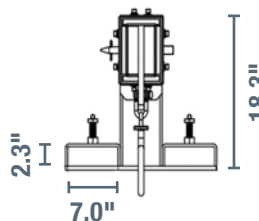
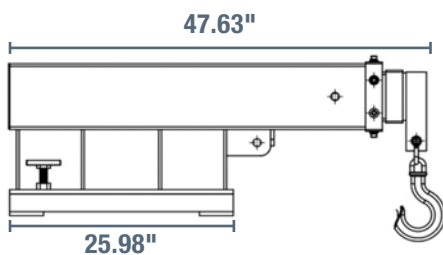
- Grip and transport heavy loads easily from above.
- Turn your forklift into a mobile crane in the blink of an eye.
- The crane arm can be extended in 4 positions.
- Secured with 2 screw clamps.



Type	Unit	Value
Brand		SolidHub
Colour		RAL 5005
Surface		Painted
Length	"	47.6
Width	"	21.3
Height	"	18.5
Weight	lbs	284.4
Max. Load	lbs	10,471.96
Size of Fork Openings	"	6.7 x 2.3



Safe working load per position				
Extension	30.71"	47.24"	62.20"	77.17"
Safe Working Load	10,471.96 lbs	5,291.09 lbs	3,968.32 lbs	3,306.93 lbs



Note that the use of the telescopic arm shifts the load center of your forklift. For more detailed information, refer to the heavy load diagram and the load center of your equipment.